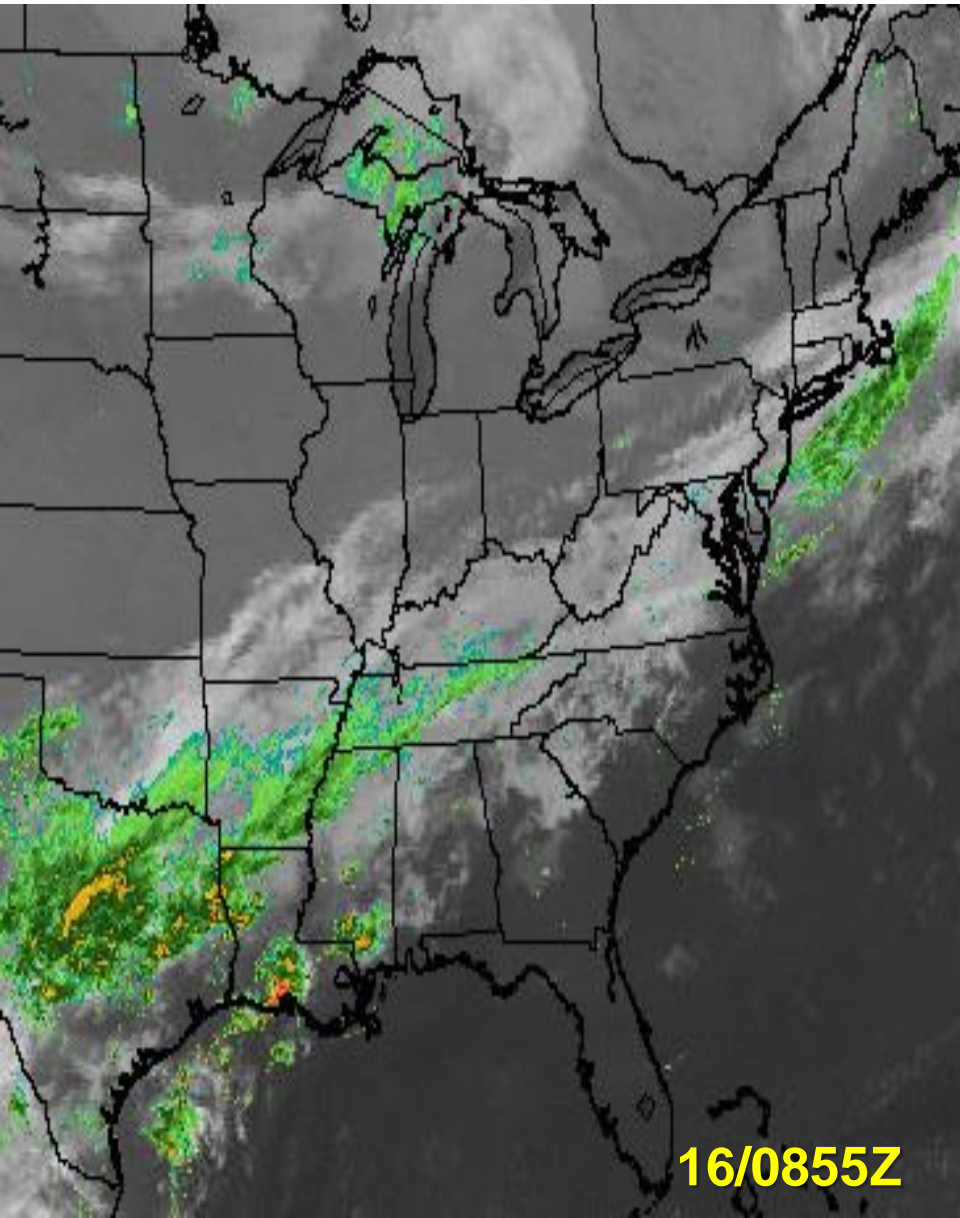
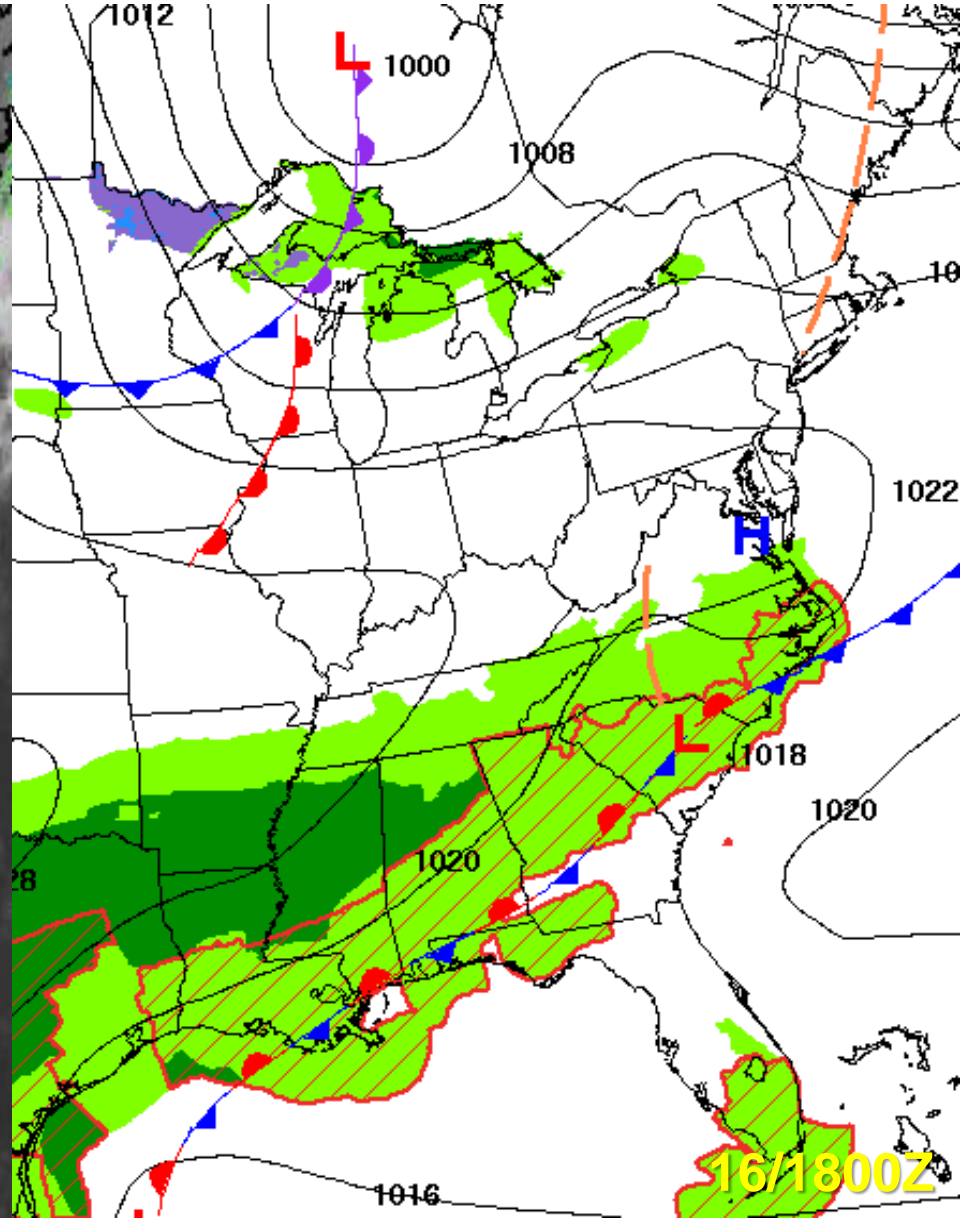




Satellite/Radar/Surface



16/0855Z



16/1800Z



Seymour 7-Day Outlook



Tue, 16 Oct			Wed, 17 Oct			Thu, 18 Oct			Fri, 19 Oct			Sat, 20 Oct			Sun, 21 Oct			Mon, 22 Oct		
PARTLY TO MOSTLY CLOUDY W/ SHWRS			MORNING SHWRS W/ MOSTLY TO PARTLY CLOUDY			PARTLY CLOUDY			PARTLY TO MOSTLY CLOUDY			CHC FOR SHWRS W/ MOSTLY TO PARTLY CLOUDY			SUNNY TO PARTLY CLOUDY			SUNNY TO PARTLY CLOUDY		
MIN CIGS 012 MIN VIS 4			MIN CIGS 030 MIN VIS 5 Wind Chill: 42°F			Wind Chill: 36°F						Wind Chill: 46°F			Wind Chill: 36°F			Wind Chill: 40°F		
LGT	PPT	WND	LGT	PPT	WND	LGT	PPT	WND	Oct			Avg. Max: 74°F			Avg. Precip: 2.9"					
0%	30%	0%	0%	60%	0%	0%	0%	0%				Avg. Min: 54°F			TS Days: 1					
0%	70%	0%	0%	0%	0%	0%	0%	0%				Fog Days: 19			Rain Days: 11					
Min / Max	Min / Max	Min / Max	Min / Max	Min / Max	Min / Max	Min / Max	Min / Max	Min / Max	Min / Max	Min / Max	Min / Max	Min / Max	Min / Max	Min / Max	Min / Max	Min / Max				
63°F / 73°F	47°F / 74°F	42°F / 62°F	55°F / 67°F	49°F / 69°F	42°F / 63°F	44°F / 62°F														
N 12KT			NE 9KT			N 9KT			NE 9KT			NW 6KT			NW 9KT			N 6KT		
SR: 0719L			SR: 0720L			SR: 0721L			SR: 0722L			SR: 0723L			SR: 0724L			SR: 0724L		
SS: 1835L			SS: 1834L			SS: 1833L			SS: 1831L			SS: 1830L			SS: 1829L			SS: 1828L		
MR: 1414L			MR: 1457L			MR: 1536L			MR: 1611L			MR: 1644L			MR: 1715L			MR: 1747L		
MS: ---			MS: 0030L			MS: 0124L			MS: 0218L			MS: 0315L			MS: 0411L			MS: 0509L		
ILL: 45%			ILL: 54%			ILL: 63%			ILL: 72%			ILL: 80%			ILL: 87%			ILL: 93%		